

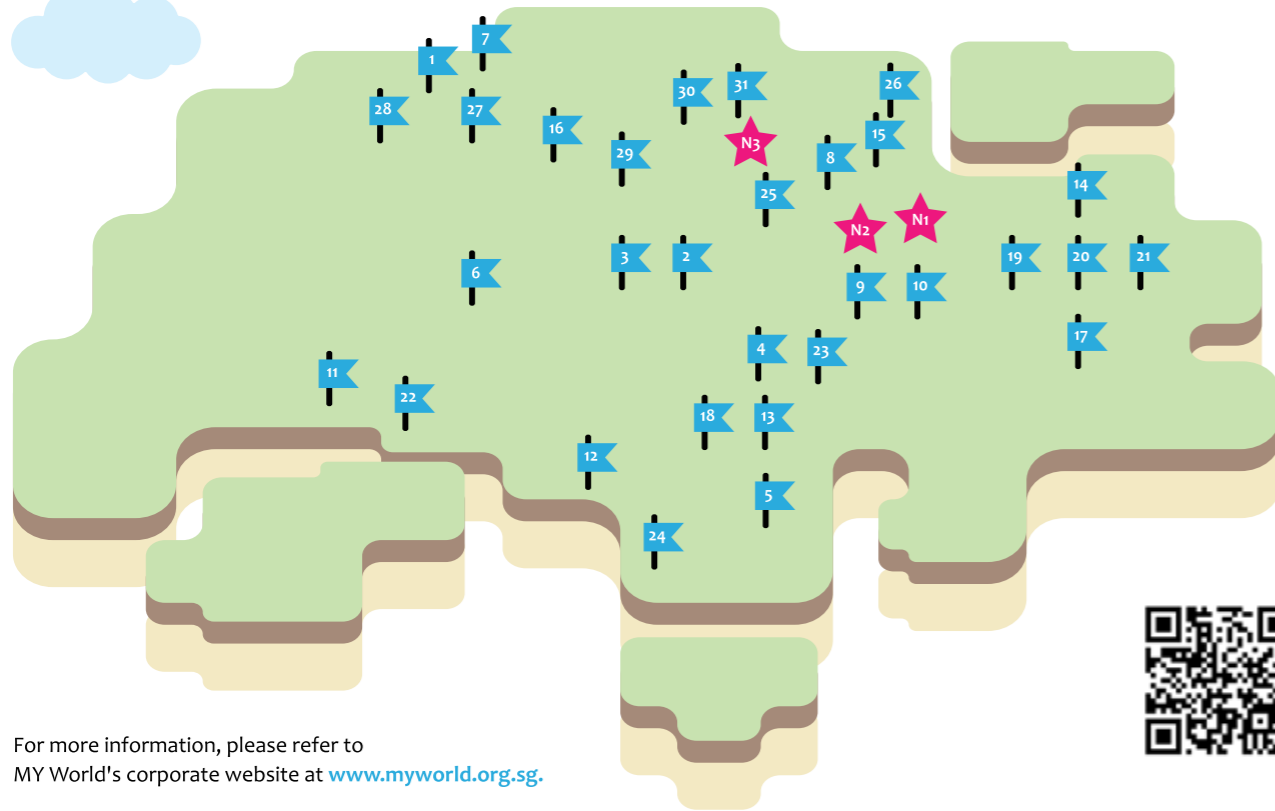
★ **NEW CENTRES
2018**

- N1. Anchorvale Parkview
- N2. Matilda Court
- N3. Yishun Ferngrove

🚩 **EXISTING CENTRES**

- | | | |
|-------------------------|------------------------|--------------------------|
| 1. Admiralty* | 12. Leng Kee | 23. Tenteram Peak |
| 2. Ang Mo Kio* | 13. McNair Towers | 24. Tiong Bahru View |
| 3. Ang Mo Kio Central* | 14. Pasir Ris* | 25. Upper Serangoon View |
| 4. Bishan* | 15. Punggol Edge | 26. Waterway Sundew |
| 5. Boon Keng* | 16. Sembawang Drive | 27. Woodlands* |
| 6. Bukit Panjang* | 17. Simei* | 28. Woodlands Circle* |
| 7. Canberra* | 18. St George's | 29. Yishun* |
| 8. Compassvale Ancilla* | 19. Tampines Central* | 30. Yishun Northland* |
| 9. Hougang* | 20. Tampines Changkat* | 31. Yishun Palm Breeze |
| 10. Hougang Dewcourt | 21. Tampines North* | |
| 11. Kang Ching* | 22. Teban Gardens | |

* SPARK-certified centres



For more information, please refer to MY World's corporate website at www.myworld.org.sg.

ANNUAL REPORT • 2017



Every Child Deserves
A Champion



CONTENTS

ABOUT US	01
NUMBERS AT A GLANCE	02
LEARNING HAVEN FOR OUR CHILDREN	03
NURTURING OUR CHILDREN	04
LEARNING FROM THE COMMUNITY	06
CELEBRATING OUR GRADUANDS	07
STAFF DEVELOPMENT	08
ACCREDITATION AND AWARDS	09
STAFF RECOGNITION & DEVELOPMENT	10
FINANCIAL REPORT	11
GOVERNANCE & LEADERSHIP	12
SENIOR MANAGEMENT TEAM	16
MY WORLD CENTRES	17

TO BE A CHILD CARE OF
CHOICE THAT BUILDS STRONG
KIDS, STRONG FAMILIES, AND
STRONG COMMUNITIES.

ABOUT US

As a subsidiary company under Metropolitan YMCA, MY World Preschool's vision is 'To be a child care of choice that builds strong kids, strong families and strong communities'.

MY World Preschool (a subsidiary company under Metropolitan YMCA) was appointed by Early Childhood Development Agency (ECDA) to provide quality child care and preschool education within the reach of today's families at affordable fees. With a proven track record of nurturing preschool children since 1980, MY World became Anchor Operator in 2014 and grew from 12 centres to **32 centres** in 2017.

OUR MISSION IS TO:

- Instil a respectful and supportive preschool experience in partnership with parents
- Nurture character and creativity
- Inspire children to unlock their potential

WE BELIEVE THAT:

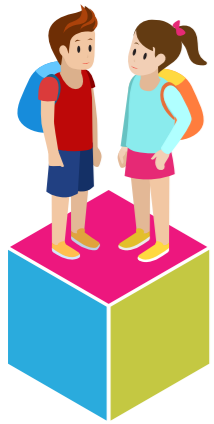
- Children are Confident Explorers, Creative Thinkers, Curious Learners and Caring Individuals
- Every Child Deserves A Champion

OUR CORE VALUES ARE:

- Caring
- Honesty
- Respect
- Responsibility



NUMBERS AT A GLANCE



2,334

Number of Children Enrolled



92

Number of Infants Enrolled



32

Total Number of Centres



22

Total Number of SPARK-Certified Centres



82

Number of Children & Families helped through our Financial Assistance Scheme "MY Friends-In-Deed"

LEARNING HAVEN FOR OUR CHILDREN

NEW CENTRES

Four new centres were opened in 2017 namely, MY World @ Yishun Palm Breeze, MY World @ Waterway Sundew, MY World @ Tenteram Peak and MY World @ McNair Towers.



MY World @ Yishun Palm Breeze



MY World @ Waterway Sundew



MY World @ Tenteram Peak

REFURBISHED CENTRES

Having been in operation for more than 20 years, MY World @ Leng Kee and MY World @ St George's got its much needed facelift in October 2017. The two centres now have a fully air-conditioned, brighter and more spacious learning space for the children after the refurbishment.



MY World @ Leng Kee



MY World @ St George's



MY World @ McNair Towers



NURTURING OUR CHILDREN

AS A VALUES-BASED PRESCHOOL WHICH PLACES A STRONG EMPHASIS ON CHARACTER DEVELOPMENT, MY WORLD STRIVES TO MAKE LEARNING ENJOYABLE THROUGH EXPERIENTIAL LESSONS AND ENCOURAGING THEM TO EXPRESS THEMSELVES OVER LIVELY DISCUSSIONS OR PERFORMANCES. HENCE WE ADOPT THE SIMPLE 3-ES APPROACH ("ENJOY- EXPERIENCE- EXPRESS") IN OUR MOTHER TONGUE CURRICULUM.

CULTURAL APPRECIATION

Nearing Chinese New Year Period, our children were brought out of their classrooms to experience the Chinese New Year festive mood and learn more about the Chinese culture, customs and traditions. Through such cultural learning trips, opportunities of learning the Chinese language came up to help our children:

- (1) Enjoy learning about Chinese Traditions.
- (2) Experience the use of Chinese language.
- (3) Express themselves (speak/write) effectively through learning Chinese calligraphy, doing arts and crafts and singing Chinese new year songs along with performing lion dances.



EXPRESSING CARE FOR THE ELDERLY

At MY World @ Sims Centre, our children were encouraged to care for the old folks at Green Avenue Elderly Home. They baked cookies, sold them and raised funds to buy basic necessities for the elderly. During Chinese New Year on 2 February 2017, our children visited the home and put up delightful performances. They also presented goodie bags and red packets to the elderly. At the end of the event, we caught glimpses of our children's broad smiles, as well as joyful expressions from the old folks.



'ON-THE-JOB' LEARNING

As part of our 'People In My Community' series, MY World @ Pasir Ris explored the theme of work with our K1 and K2 children through "on-the-job training" at KidZania on 9 February 2017! Through the different role-plays, our K1 children put themselves into the shoes of different occupations and community helpers as they collaborated as a team and "earned their keep". With exposure to different skillsets, discoveries of our children's interests and strength through this field trip were made and this will serve to empower them as they decide on their vocational paths in the future.



GIVING FLIGHT TO DREAMS

MY World @ Bishan organised a learning trip for our K1 and K2 students to Seletar Aerospace View on 26 April 2017. Engaging the help of trainers from ECK Solutions Pte Ltd, supported by CAAS and WingsOver Asia, our children learned about the history, key achievements and milestones of our local aviation industry through interesting activities that involved board games, the colouring of aeroplanes and a sing-along session. They also had a rare opportunity to touch the different parts of an aircraft.

LEARNING FROM THE COMMUNITY

AT MY WORLD, BESIDES LEARNING THROUGH EXPERIENCES, WE WOULD LIKE TO EXPAND OUR CHILDREN'S SOCIAL AND EMOTIONAL SKILLS BY CREATING OPPORTUNITIES FOR THEM TO INTERACT WITH DIFFERENT FRIENDS AND PEOPLE GROUPS AT OUR PRESCHOOLS AND NEIGHBOURHOODS.



A STEP TOWARDS COMPASSION

On 17 April 2017, our teachers at MY World @ Yishun invited guides from Dialogue in the Dark (DID) to our centre to share their expertise on navigating the dark and their life experiences with our children. DID is a collaboration between Ngee Ann Polytechnic and Dialogue Social Enterprise. Our children sat in whole-hearted attention as they listened to first-hand perspectives from the guides and learned what it meant for the visually-impaired community to feel included in our society. Importantly, our children also learned that curiosity is often the first step towards compassion.



KEEPING SAFE

On 29 March 2017, MY World @ Hougang Dewcourt invited Hougang Neighbourhood Police to give an educational talk to our playgroup and K1 children. Our children learned how to recognise a police officer from his or her uniform and equipment. They also learned practical safety etiquettes like not accepting goodies from strangers, noticing and telling their parents about unattended belongings in public spaces and how to carry out other personal safety measures. Our children learned that it is possible to gain control over their immediate safety and well-being even at their young age.



HEALTHY EATING, HEALTHY LIVING

On 28 April 2017, MY World @ Sembawang Drive organised an afternoon complimentary health screening for our parents and children which allowed them to interact with the friendly team of doctors from National University Hospital (NUH) and find out about their own health. It was an educational session, as both parents and children got to learn more about healthy eating and living habits, as well as how regular physical activity enables us to live more fully.

CELEBRATING OUR GRADUANDS

26TH COMBINED GRADUATION CEREMONY

We held our K2 graduation ceremony on 24 November 2017, with pride and gratitude at Republic Polytechnic over two sessions. To showcase the learning experiences over the past years, 400 graduates from 28 of our MY World Preschool centres put up delightful song and dance items.

The theme for the graduation concert, "Seeing Your World Within MY World", was inspired by the curiosity, creativity and confidence of our young children. Whether the children sang as a group or solo, their voices and enthusiasm touched our hearts. The dances, movements and skits all told stories of their expanding world view and allowed the audience to see their world through unbiased lenses. What a magical and awesome concert it turned out to be!



STAFF DEVELOPMENT



MY WORLD SYMPOSIUM

On 27 and 28 July 2017, we held our debut symposium at our headquarters with the theme, “Seeing Your World within MY World”. 400 passionate educators from 31 of our centres came together as one strong family to learn, develop and grow in knowledge through workshop topics, as well as through exciting exchanges of insights and perspectives.

The topics shared were carefully curated to aid attendees in their professional development and to increase their knowledge in best practices of early childhood education. Some of the topics featured in the workshops involved designing eco-friendly environments, positive parenting, how to nurture the artistic development of children and more.



OVERSEAS LEARNING TRIP

Our MY World educators take pride in their learning, because it helps them to improve and become better educators. On 5 to 11 April 2017, 14 of our teachers and principals further deepened their craft of teaching through an overseas learning trip to selected preschools in Shanghai and Suzhou.

During the trip, our educators were introduced to various dynamic preschool projects at Soong Ching Ling Kindergarten, Hua Ai YMCA, Hai Su Kindergarten and Ctrip Centre. They exchanged perspectives with practitioners from Nordic Treehouse Preschool & Kindergarten, Canadian International School and Xin Xin Garden Kindergarten.



ACCREDITATION AND AWARDS

SPARK CERTIFIED CENTRES

The Singapore Pre-school Accreditation Framework (SPARK) is a quality assurance framework awarded by the Early Childhood Development Agency (ECDA) to assist preschools in Singapore in raising their quality. This certification recognises centres with quality teaching and learning practices, which includes a well-designed and integrated curriculum, and strong pedagogies to support children’s holistic development in an environment that is conducive for learning.

On 6 October 2017, 10 of our centres received the Singapore Pre-school Accreditation Framework: MY World @ Admiralty, MY World @ Ang Mo Kio Central, MY World @ Bishan, MY World @ Boon Keng, MY World @ Canberra, MY World @ Compassvale Ancilla, MY World @ Kang Ching, MY World @ Tampines North, MY World @ Woodlands and MY World @ Woodlands Circle.

EARLY CHILDHOOD INNOVATION MERIT AWARD

MY World @ Ang Mo Kio received the Early Childhood Innovation Merit Award at the 2017 Early Childhood Conference on 6 October. The award recognised MY World @ Ang Mo Kio’s innovative initiative, ‘I Spy with My Arty Eyes’, which showcased the creative endeavours of the children. Organised by the Early Childhood Development Agency (ECDA), this conference brought together parents and early childhood professionals to share practical tips and innovative ideas that everyone could use to support our children’s learning and development.



STAFF RECOGNITION & DEVELOPMENT

MY CHAMPIONS

MY Champion is a title awarded to MY World Preschool professionals who have been exemplary role models. Besides showing attributes of being a proficient child care professional, a lifelong learner, a team player and a role model, MY Champions are recognised to live out our core values of Caring, Honesty, Respect and Responsibility.



Liu Ping
MY World @ Canberra



Doce Karen Andal
MY World @ Sims



Wang Tee Choo
MY World @ Upp Serangoon View



Sharon Anne Tan Wei Ling
MY World @ Tampines Changkat



Cadiao Ma Jasmine Mendoza
MY World @ Ang Mo Kio



Huang Mingqun
MY World @ Yishun



Li Yingnan
MY World @ Simei



Lim Ching Yi Vivian
MY World @ Ang Mo Kio Central



Ong Jing Ru
MY World @ Bishan



Shireen Rentoy Shahmardani
MY World @ Simei



Yang Qing Qing
MY World @ Hougang



Yu Yun Qing
MY World @ Sembawang Drive

FINANCIAL REPORT

MY WORLD PRESCHOOL LTD

(Incorporated under the Companies Act, Cap. 50)

SUMMARY FINANCIAL STATEMENTS FOR THE YEAR ENDED 31 DECEMBER 2017

	2017	2016
	S\$'000	S\$'000
STATEMENT OF FINANCIAL POSITION		
Plant & Equipment	6,195	6,089
Current Assets	10,011	6,659
Total Assets	16,206	12,748
Current Liabilities	(6,336)	(7,414)
Non-Current Liabilities	(1,983)	(1,459)
Total Liabilities	(8,319)	(8,873)
NET TOTAL ASSETS	7,887	3,875
ACCUMULATED FUND	7,887	3,875
STATEMENT OF COMPREHENSIVE INCOME		
Revenue:		
Child Care and Infant Care	20,993	17,368
Government Grants	13,117	8,866
Others	26	35
	34,136	26,269
Operating Expense:		
Employee benefits expense	(20,517)	(16,332)
Depreciation of plant & equipment	(2,854)	(2,184)
CSR expense	(276)	(164)
Child Care and Infant Care operating expenses	(6,477)	(5,461)
	(30,124)	(24,141)
TOTAL COMPREHENSIVE INCOME	4,012	2,128
STATEMENT OF CHANGES IN ACCUMULATED FUND		
BALANCE BROUGHT FORWARD	3,875	1,747
TOTAL COMPREHENSIVE INCOME	4,012	2,128
BALANCE CARRIED FORWARD	7,887	3,875
STATEMENT OF CASH FLOWS		
Net cash effect of operating activities	(4,322)	(3,040)
Net cash effect of investing activities	(2,911)	(2,810)
Net cash effect of financing activities	9,110	8,201
Net change in cash and cash equivalents	1,877	2,351
Cash and cash equivalents as at 1 January	6,278	3,927
Cash and cash equivalents as at 31 December	8,155	6,278

The above summary financial statements are based on financial statements audited by Cypress Singapore Public Accounting Corporation.

GOVERNANCE & LEADERSHIP

MY WORLD BOARD OF DIRECTORS 2017/2018

The MY World Preschool Board of Directors oversees the development, operations and quality of childcare/ infant care as anchor operator.

GOVERNING STATEMENTS

MY World Preschool Ltd is committed to a high standard of compliance with accounting, financial reporting, internal controls, corporate governance and auditing requirements and any legislation relating thereto. In line with this commitment, the following policies are in place:

- A policy to avoid Conflict of Interest: to ensure that any director who is in any way directly or indirectly has an interest in a transaction or project or other matter to be discussed at a meeting, he is required to disclose the nature of his interest before the discussion on the matter begins, and abstain from discussion and decision-making on such matters. The recruitment of staff with close relationship (i.e. those who are more than acquaintances) with current directors go through the established human resource procedures for recruitment. Directors serve without remuneration. Directors protect the confidentiality of all confidential information and records of the Association, and will not make use of or reveal such information or records except in course of the performance of duties or unless the documents or information becomes a matter of general public knowledge. Confidential information should not be used to further private interests.
- A policy on Whistleblowing aims to provide an avenue for employees and external parties to raise concerns and offer reassurance that they will be protected from reprisals or victimisation for whistleblowing in good faith.
- Board directors serve without remuneration. Board Directors are Full Members of MYMCA who are eligible for membership benefits, which include:
 - Discounts from MYMCA retail partners and MYMCA corporate souvenirs
 - Discounts at MYMCA Restaurant (Stevens), Café Lodge at YWCA of Singapore (Fort Canning) and Y Café at YMCA of Singapore (Orchard)
 - Participation in workshops and programmes at Members' rates
 - Eligibility to book conference facilities
 - Birthday vouchers at MYMCA Restaurant
 - Preferential accommodation rates at MYMCA and worldwide YMCA partners
 - Usage of swimming pool facility & gym at non-peak or programme hours
 - Updates on community service and volunteer opportunities
 - Regular newsletters and updates on programmes and promotions
- Key staff are not involved in setting their own remuneration, which is instead determined by the Board Exco. Recruitment of staff with close relationship (i.e. those who are more than acquaintances) with current directors go through the established human resource procedures for recruitment.
- The company does not make loans or donations to external or related parties, except as approved by the Board of Directors and reported in the financial statements.



Back row (L-R): Mr Terrence Chee, Mr Charis Gabriel Lim, Dr Irvin Seet, Mr Eugene Lim, Mr David Wong | Front row (L-R): Ms Phyllis Tan, Mr Arthur Lim, Dr Samuel Yeak, Prof Leslie Chew, Dr Alice Seng

BOARD OF DIRECTORS 2017/ 2018

	NAME	PROFESSION/EMPLOYER	DATE APPOINTED	ATTENDANCE
1.	Dr Samuel Yeak (Chairman)	ENT Surgeon, Amandela ENT Head & Neck Surgery Centre	January 2014	8 out of 9
2.	Dr Seng Seok Hoon Alice	Assoc Prof, NIE (Rtd)	January 2014	9 out of 9
3.	Tan Hwee Sim Phyllis	Executive Director & CEO of MYMCA	January 2014	9 out of 9
4.	Eugene Lim, PBM	Director of Resource Development, TWR Asia	May 2016	7 out of 9
5.	Dr Seet Chim Chuan Irwin	Director, Student Development, Singapore Sports School	May 2016	7 out of 9
6.	David Wong Wei Li, PBM	Businessman	May 2016	7 out of 9
7.	Prof Leslie Chew Kwee Hoe, PBM, SC	Dean, School of Law, Singapore University of Social Sciences	May 2016	6 out of 9
8.	Arthur Lim Eng Hian	Company Director, Kian Hin/ UMP	May 2016	4 out of 9
9.	Lim I-Ern Charis Gabriel	CEO, Research Communication International Pte Ltd	April 2016	6 out of 9
10.	Terrence Chee Teng Hsiu	Corporate Investment and Financial Services Advisor	May 2017	5 out of 9

GOVERNANCE DISCLOSURE

S/NO.	CODE DESCRIPTION	CODE ID	COMPLIANCE
BOARD GOVERNANCE			
A	Are there Board members holding staff appointments? Yes		
1	If the governing instrument permits staff to become Board members, they should comprise not more than one-third of the Board.	1.1.2	Complied
2	Staff does not chair the Board.	1.1.2	Complied
3	There is a maximum limit of four consecutive years for the Treasurer position (or equivalent, e.g. Finance Committee Chairman).	1.1.6	Complied
4	The Board has an audit committee (or designated Board members) with documented terms of reference.	1.2.1	Complied
5	The Board meets regularly with a quorum of at least one-third or at least three members, whichever is greater (or as required by the governing instrument).	1.3.1	Complied
CONFLICT OF INTEREST			
6	There are documented procedures for Board members and staff to declare actual or potential conflicts of interest to the Board.	2.1	Complied
7	Board members do not vote or participate in decision-making on matters where they have a conflict of interest.	2.4	Complied
STRATEGIC PLANNING			
8	The Board reviews and approves the vision and mission of the charity. They are documented and communicated to its members and the public.	3.1.1	Complied
9	The Board approves and reviews a strategic plan for the charity to ensure that the activities are in line with its objectives.	3.2.2	Complied
HUMAN RESOURCE MANAGEMENT			
10	The Board approves documented human resource policies for staff.	5.1	Complied
11	There are systems for regular supervision, appraisal and professional development of staff.	5.6	Complied
FINANCIAL MANAGEMENT AND CONTROLS			
12	The Board ensures internal control systems for financial matters are in place with documented procedures.	6.1.2	Complied
13	The Board ensures reviews on the charity's controls, processes, key programmes and events.	6.1.3	Complied

S/NO.	CODE DESCRIPTION	CODE ID	COMPLIANCE
14	The Board approves an annual budget for the charity's plans and regularly monitors its expenditure.	6.2.1	Complied
15	The charity discloses its reserves policy in the annual report.	6.4.1	Complied
B	Does the charity invest its reserves? Yes		
16	The charity invests its reserves in accordance with an investment policy approved by the Board. It obtains advice from qualified professional advisors, if deemed necessary by the Board.	6.4.3	Complied
FUNDRAISING PRACTICES			
17	Donations collected are properly recorded and promptly deposited by the charity.	7.2.2	Not Applicable
DISCLOSURE AND TRANSPARENCY			
18	The charity makes available to its stakeholders an annual report that includes information on its programmes, activities, audited financial statements, Board members and executive management.	8.1	Complied
C	Are Board members remunerated for their Board services? No		
19	No Board member is involved in setting his or her own remuneration.	2.2	Complied
20	The charity discloses the exact remuneration and benefits received by each Board member in the annual report.	8.2	Complied
D	Does the charity employ paid staff? Yes		
21	No staff is involved in setting his or her own remuneration.	2.2	Complied
22	The charity discloses in its annual report the annual remuneration of its three highest paid staff who each receives remuneration exceeding \$100,000, in bands of \$100,000. If none of its top three highest paid staff receives more than \$100,000 in annual remuneration each, the charity discloses this fact.	8.3	Complied
PUBLIC IMAGE			
23	The charity accurately portrays its image to its members, donors and the public.	9.1	Complied

SENIOR MANAGEMENT TEAM

Ms Phyllis Tan, Director
 Ms Grace Chan, Group Chief Operating Officer
 Mr Sunny Lee, Group Chief Financial Officer
 Dr May See, Senior General Manager
 Ms Shirley Wong, Group General Manager, Human Resources
 Ms Jenny Wong, Assistant General Manager
 Ms Karen Hong, Assistant General Manager Human Resources (2018)
 Ms Dorcas Yu, Group Senior Manager, Building Infrastructure & Development Services
 Ms Eleanor Tan, Group Senior Manager, Corporate & International Affairs
 Dr Melinda Eng, Head of Curriculum



Ms Grace Chan Lin Yun
Group Chief Operating Officer

Ms Grace Chan rejoined Metropolitan YMCA on 1 Jul 2011 as COO. She holds a Bachelor of Business (Honours) specialising in Marketing from NTU, and a Graduate Diploma in HRM (Prudential Assurance Award) in 2006 as well as the LKY Management of Non-Profit Organisations (NPM21) in 2013. Grace was the Owner Representative with United Overseas Land, Deputy GM of Sheraton Suzhou Hotel & Towers and Pan Pacific Suzhou from Feb 2008- Feb 2011. She had begun her career in Metropolitan YMCA from Nov 1993 to Jul 2004, undertaking various portfolios including Membership, Public Affairs, Programmes and Hospitality.



Mr Sunny Lee Hock Lai
Group Chief Financial Officer

Mr Sunny Lee joined the Metropolitan YMCA on 1 Dec 2006. Sunny is a Singapore Chartered Accountant, having received his professional certification from ACCA(UK). He had gained more than 10 years of experience in the field of accounting with a local listed company, external auditing experience with a local top firm and overseas consultancy experience in both European and US companies prior to joining the Association.



Dr May See
Senior General Manager

Dr May See joined the Metropolitan YMCA on 8 Jun 1992, and was subsequently promoted to General Manager of Child Care and Programmes, supervising child care, student care, programmes and community outreach. She was conferred the Doctor of Education degree from University of Western Australia in Jul 2008.

ADVISERS

Bankers:
 OCBC, BEA, RHB

Lawyers:
 Messrs Hilborne Law LLC

Auditors:
 Cypress Singapore PAC
 (external)

Corporate Secretary:
 Corporate Management
 Services Pte Ltd

MY WORLD CENTRES

Admiralty (*SPARK-certified)
 787B Woodlands Crescent #01-82 S(732787)
 Tel: 6362 1566
 Email: ccadm@myworld.org.sg

Ang Mo Kio (*SPARK-certified)
 584 Ang Mo Kio Street 51 #01-3107 S(560584)
 Tel: 6451 1207
 Email: ccamk@myworld.org.sg

Ang Mo Kio Central (*SPARK-certified)
 700B Ang Mo Kio Ave 6 #01-320 S(562700)
 Tel: 6481 3254
 Email: ccamk.ctrl@myworld.org.sg

Bishan (*SPARK-certified)
 171 Bishan Street 13 #01-13 S(570171)
 Tel: 6259 0071
 Email: ccbis@myworld.org.sg

Boon Keng (*SPARK-certified)
 4 Boon Keng Road #01-110 S(330004)
 Tel: 6293 0279
 Email: ccbk@myworld.org.sg

Bukit Panjang (*SPARK-certified)
 217 Petir Road #01-385 S(670217)
 Tel: 6763 3763
 Email: ccftp@myworld.org.sg

Canberra (*SPARK-certified)
 350B Canberra Road #01-221 S(752350)
 Tel: 6481 5569
 Email: cccbr@myworld.org.sg

Compassvale Ancilla (*SPARK-certified)
 281B Seng Kang East Ave #01-605 S(542281)
 Tel: 6384 2870
 Email: cccpv.ancilla@myworld.org.sg

Hougang (*SPARK-certified)
 373 Hougang Street 31 #01-65 S(530373)
 Tel: 6280 8744
 Email: cchgg@myworld.org.sg

Hougang Dewcourt
 Blk 376A Hougang Street 32 #01-06 S(531376)
 Tel: 6280 0827
 Email: cchgg.dewcourt@myworld.org.sg

Kang Ching (*SPARK-certified)
 354 Kang Ching Rd #01-23 S(610354)
 Tel: 6267 4907
 Email: cckc@myworld.org.sg

Leng Kee
 52 Lengkok Bahru #01-301 S(150052)
 Tel: 6473 3109
 Email: cclke@myworld.org.sg

McNair Towers
 113 , McNair Road #01-02 S(321113)
 Tel: 6291 3166
 Email: admin.ccmnr.towers@myworld.org.sg

Pasir Ris (*SPARK-certified)
 575 Pasir Ris Street 53 #01-06 S(510575)
 Tel: 6585 1260
 Email: ccpasir.ris@myworld.org.sg

Punggol Edge
 Blk 121 Edgedale Plains #01-01 S(820121)
 Tel: 6386 3002
 Email: ccpgl.edge@myworld.org.sg

Sembawang Drive
 462 Sembawang Drive #01-223 S(750462)
 Tel: 6481 2905
 Email: ccsemb.driv@myworld.org.sg

Simei (*SPARK-certified)
 123 Simei Street 1 #01-402 S(520123)
 Tel: 6784 2674
 Email: ccsm@myworld.org.sg

St. George's
 14 St George's Road #01-70 S(320014)
 Tel: 6298 2543
 Email: ccstg@myworld.org.sg

Tampines Central (*SPARK-certified)
 855 Tampines Street 83 #01-262 S(520855)
 Tel: 6786 3590
 Email: cctmp.ctrl@myworld.org.sg

Tampines Changkat (*SPARK-certified)
 113 Tampines Street 11 #01-151 S(521113)
 Tel: 6782 7200
 Email: cctmp.ckt@myworld.org.sg

Tampines North (*SPARK-certified)
 428 Tampines Street 41 #01-459 S(520428)
 Tel: 6781 0592
 Email: cctmp.north@myworld.org.sg

Teban Gardens
 55 Teban Gardens Road #01-455 S(600055)
 Tel: 6262 4688
 Email: cctbg@myworld.org.sg

Tenteram Peak
 116 Jalan Tenteram #01-07 S(320116)
 Tel: 6397 4927
 Email: ccttr.peak@myworld.org.sg

Tiong Bahru View
 9B Boon Tiong Road #01-515 S(163009)
 Tel: 6271 0355
 Email: cctgb.view@myworld.org.sg

Upper Serangoon View
 476C Upper Serangoon View #01-534 S(533476)
 Tel: 6385 3461
 Email: ccusr.view@myworld.org.sg

Waterway Sundew
 Blk 661B, Edgedale Plains #01-616 S(822661)
 Tel: 6655 2362
 Email: ccwty.sundew@myworld.org.sg

Woodlands (*SPARK-certified)
 863 Woodlands Street 83 #01-190 S(730863)
 Tel: 6269 4829
 Email: ccwlds@myworld.org.sg

Woodlands Circle (*SPARK-certified)
 725 Woodlands Avenue 6 #01-494 S(730725)
 Tel: 6362 2913
 Email: ccwlds.circle@myworld.org.sg

Yishun (*SPARK-certified)
 760 Yishun Street 72 #01-314 S(760760)
 Tel: 6257 6770
 Email: ccyis@myworld.org.sg

Yishun Northland (*SPARK-certified)
 270 Yishun St 22 #01-58 S(760270)
 Tel: 6756 0729
 Email: ccynl@myworld.org.sg

Yishun Palm Breeze
 502D Yishun Street 51 #01-460 S(764502)
 Tel: 6257 2101
 Email: ccyis.palmbreeze@myworld.org.sg